

# CARING BY DESIGN

Groupe Lacasse Healthcare Solutions



GROUPE  
**LACASSE**



## CARING BY DESIGN

In the ever-evolving landscape of healthcare, creating spaces that promote healing, well-being, and compassion is paramount. That's where Groupe Lacasse steps in as a trusted partner, offering a comprehensive range of healthcare solutions designed to transform healthcare environments into optimal settings for patients, their support system and healthcare professionals.

We bring decades of expertise to the table, specializing in the design and manufacture of innovative furniture tailored to the unique needs of healthcare facilities. Whether you're outfitting a hospital, clinic, or long-term care facility, our solutions are crafted with meticulous attention to detail, and blend thoughtful design with durability.

*At Groupe Lacasse, we care by design.*











## Collaborative Paths to Well-Being

The heart of our healthcare solutions lies in our patient-centric design philosophy. We firmly believe in creating spaces where a genuine partnership forms between patients and their caregivers. Through innovative design, cutting-edge technology, and a deep understanding of the power of community, we aim to create environments that foster trust, collaboration, and a shared commitment to well-being.

















## Making the Right Choice with Neocase

---

Introducing Neocase Modular Casework by Groupe Lacasse – the *ultimate* solution to all your casework requirements. Say goodbye to traditional millwork and embrace a robust, cost-effective, and customizable alternative that consistently exceeds all expectations.

Unlike built-in millwork that can quickly degrade over time, Neocase offers customization options coupled with the quality, durability, and warranty you'd expect from high-end commercial furniture, making Neocase a game-changer in the industry.

Our parametrically designed products ensure your design vision remains uncompromised, as Neocase effortlessly adapts to any space, delivering exquisite solutions that surpass custom-built installations.

Neocase's excellence doesn't end there. Our products are specifically engineered for intensive use environments, making them perfect for 24/7/365 utilization. Our pioneering laser-applied Fuze edgebanding ensures edgeband delamination is a thing of the past. The fully sealed casework is easy to clean and seamless edges remove opportunities for microbial buildup.















## Behavioral Healthcare Solutions

---

Behavioral healthcare furniture goes beyond conventional considerations of comfort and aesthetics; it is specifically tailored to address the unique challenges and needs of individuals who may be experiencing difficult times. Our casework is the logical solution for this type of environment with its concealed joinery, permanent edgebanding, piano hinges and tamper resistant screws.

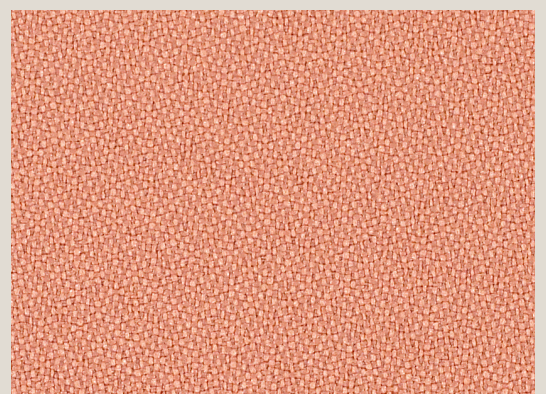
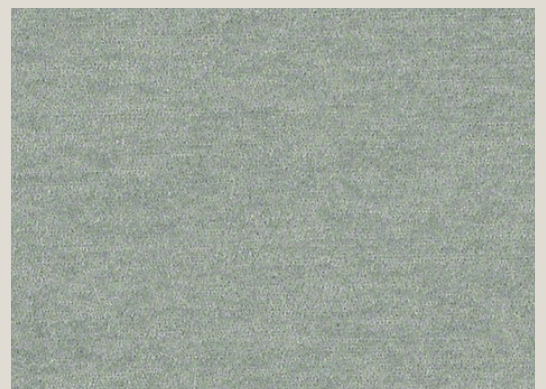
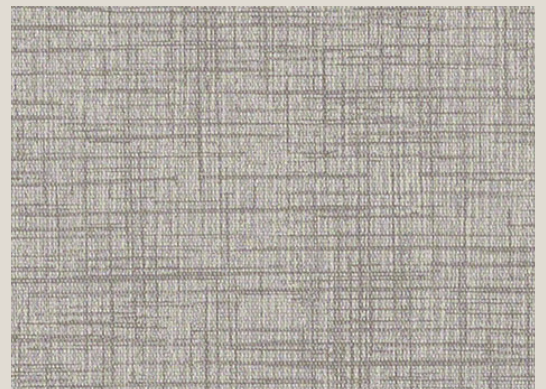




## Design with Intention

---

A thoughtful approach to color selection in healthcare design serves as a cornerstone for creating environments that prioritize healing, safety, and a general sense of warmth. When colors are strategically chosen, the impact on the overall quality of care within healthcare facilities becomes even more pronounced.









## Breathe In, Breathe Out

---

From the moment they step into a healthcare facility, patients and their support system should feel a sense of comfort and reassurance. Respite areas play a vital role in providing a much-needed space to take a break from the often stressful and demanding surroundings of healthcare environments. The power of choosing the right furniture for these calming spaces cannot be overstated, as it significantly contributes to a calming atmosphere.



















## Providing the Right Kind of Support

---

Waiting areas often play a critical role in the journey of patients and their families. It is therefore crucial to create spaces where everyone can unwind and find moments of peace. By doing so, we can enhance the overall healthcare experience, ensuring that all patients feel genuinely nurtured and supported.



## Well-Being for All

From laboratories to pharmacies, special attention must be given to space utilization, workflow, staff interaction, and above all ergonomics. A well-organized space enhances focus, while specific products, like height-adjustable tables, encourage movement, reducing discomfort. Dynamic spaces will help alleviate physical tensions during the workday.





















## Expertise At Its Best

We prioritize flexibility in our design, recognizing that healthcare is an ever-evolving field that must adapt rapidly. Neocase casework delivers with affordable products built for inpatient and outpatient settings, clinical spaces, labs, pharmacies, nurse stations, and so much more. Discover the Neocase difference today and experience a casework solution that surpasses all expectations.





















MONTRÉAL • TORONTO • CHICAGO • NEW YORK

[groupelacasse.com](http://groupelacasse.com)